
A TRUE QUALITY
OF LIFE.

MADE FOR
GENERATIONS.



SCHEUCHER®

SUSTAINABLE OR BEAUTIFUL?

YOU DON'T HAVE TO DECIDE.

More and more, people long for character and a down-to-earth harmony and natural beauty. Or for less common ideas. It is not surprising that wood captures people's hearts more than ever today. And that there are specialists who bring fine woods of the best quality into our rooms.

Just like Scheucher.

One hundred years of experience and a never-ending passion for natural wood materials are the ground on which our Styrian family company still stands today and enthusiastically produces the most unique parquet floors for your home!



04

QUALITY FROM AUSTRIA

Natural & healthy living
Parquet, guaranteed from real wood
Production & sustainability

08

LIVE MORE COLORFULLY

Range guide
Dimensions and installation patterns
Wood types and colors
Gradings
Structures
Surface finishes

24

WOOD TELLS STORIES

Products and stories
Oak Select | Natur | knotty | Country
Oak steamed
Oak smoked Medium
Oak smoked
Black Walnut

60

TREND COLLECTION

Elevation
20 inspiring products

68

ACCESSORIES

Parquet steps
Skirting boards
Care and cleaning

72

PARQUET FINDER

74

ROOM CLIMATE

CONTENTS

AS INDIVIDUAL AS NATURE.

As one of the largest and most effective living spaces and the fact that we spend the majority of our time indoors, the floor is an enormously important part of any building and influences not only its appearance, but also the indoor climate and, as a result, the well-being and health of you and your family.

By choosing a wooden floor, you are bringing a large piece of nature into your living space, creating optimum indoor climate conditions and, above all, being absolutely on trend when it comes to design - a trend that will certainly not disappear, since wooden floors hit the taste of the time since centuries. Thanks to a wide variety of wood types, surface treatments and dimension such as longstrips in a wide range of sizes, classic 3-strips or trendy installation patterns such as herringbone, cubes and much more, there are hardly any limits to the design possibilities. Thanks to our collaboration with interior architects, designers and the furniture industry, our range of parquet flooring is constantly adapted to the latest furnishing trends, but we also always have the classics on hand to suit every taste and style.

TIMELESS,
MODERN &
MULTIFACETED



INNOVATIVE, HYGIENIC & EASY TO CARE FOR

As natural design and technical wonders, Scheucher parquet floors meet all the requirements of modern construction processes and create the optimum basis for a healthy indoor climate and a timelessly beautiful interior - to suit your taste.

Germs, mites and other troublemakers don't stand a chance at parquet. Wood also has a natural antistatic effect and doesn't attract dust - this combination makes our parquet particularly long-lasting and easy to care for. Vacuuming and, if necessary, wiping up damp is absolutely sufficient for the regular cleaning.



4

DURABLE, NATURAL & HEALTHY

Quality and durability are two of the many principles behind our products and the developments that go with them. With the purchase of a Scheucher parquet floor, you are an absolute role model for sustainable consumption: you get a healthy, natural product with a long service life, which can also be repaired if necessary - and it looks great, too.

Parquet has the ability to compensate for differences in humidity and absorb harmful substances in the air to optimize the air quality in the room. In addition to numerous indoor climate benefits, our human body as a sensitive measuring device, discerns wood not just visually but also through touch or sense of smell. As it is a familiar material, our body knows that wood is not harmful and instinctively reacts by switching over to relaxation and rest. This not only contributes to our physical health but also influences our nervous system and helps us to relax and cope with stress.

Its surface, that is always warm to the feet, and the structural quality of a grown element gives living and working spaces something deeply lively. This uniqueness makes every Scheucher parquet floor unique, having its own character that provides a treat for all the senses.



*The current warranty conditions apply.



AS INDIVIDUAL AS YOU.



MADE FOR GENERATIONS

Parquet is an investment for life - which is why Scheucher's high-precision production ensures the unique quality of every single parquet. Both the optimal use of resources and the exclusive use of absolutely environmentally friendly methods in every single production step are among our principles. This enables the traditional family business to produce an excellent quality product with every parquet. A quality product that delivers what it promises - we vouch for this with our name, our appreciation of wood as a natural product and the Scheucher guarantee: the full functionality of every Scheucher wooden floor is guaranteed for 30 years in private use*.

Thanks to robust structures, high-quality precious wood wear layers, the most innovative surface technologies and reparability, your parquet floor can last for generations in full beauty and, like other floor coverings, does not have to be replaced and disposed of immediately.



5

100% MADE IN AUSTRIA



Our commitment to sustainability:



GUARANTEED MADE FROM REAL WOOD



RealWood is the official seal of the European Parquet Association confirming the parquet is made from real wood and is no artificial replication.

Not every floor covering that looks like wood is actually real wood. When describing floor coverings, consumers are often misled with deceptive statements and denunciations. For example, „vinyl parquet“ or „LVT prefinished parquet“ is in no way a product made of real wood, but imitations or floor coverings with a petroleum-based, thermoplastic and plasticized vinyl wear layer. „Laminat parquet“ is a melamine resin-coated plastic wear layer. Inform yourself and make sure that you come across wood and not a replica. An invaluable decision-making aid, when selecting your floor, is the quality seal „Real Wood“, which is valid throughout Europe. It marks real wood and differs from all other wood-imitating floor coverings. Moreover the trademark stands for an excellent life cycle assessment of real wood. According to the Europe-wide valid standard EN13756, parquet is defined as „wooden floor with a wear layer thickness of at least 2.5 mm before installing“.

All Scheucher parquet floors are subject to ongoing internal and external checks and have multiple certifications

AS ONE OF THE FIRST PARQUET MANUFACTURERS

Scheucher is one of the first parquet manufacturers to carry the EU Ecolabel. The EU Ecolabel is a cross-border environmental label that serves as a uniform identification for environmentally friendly and durable products of high quality in the common European market. With the EU Ecolabel, Scheucher contributes to the general political goals of the circular economy, climate neutrality, zero pollution and several Green Deal initiatives



As a family business with more than 100 years of tradition, we feel responsible for your well-being and satisfaction with our products, and with their production also for our environment and the protection of our climate. Therefore it is solely carried out with materials that are tested for harmful substances in absolutely environmentally friendly and resource-saving processes. With our natural and durable products, we not only want to encourage environmental awareness and well-being in your home, but also prove that we are already starting to do so in our own factory with our great photovoltaic system: With 17,000 solar panels on a roof area of 30,000 m², it is currently one of the largest roof system in Austria and helps us avoid up to four million kilograms of CO₂ emissions every year.

Our new 5 MW hot water boiler system also complies with the latest environmental standards and is equipped with an electrostatic precipitator. This ensures that an emission limit value for dust of 20 mg/m³ can be complied with. Scheucher Holzindustrie heats the entire site in Zehendorf as well as the hot water presses exclusively with residual wood. The rest is pressed into high-quality wood briquettes. Wood chips are sold to private households or public heat plants.

4
MLN
KGS

This is the amount of CO₂ emissions that we avoid every year thanks to our company's own photovoltaic roof system.



Scheucher supports sustainable construction via Environmental Product Declarations (EPDs). Our EPD is based on international standards (ISO 14025, ISO 14040ff) as well as the European DIN EN 15804, which provides the basis for EPD's throughout Europe. It is listed for the sustainability assessment of buildings at IBU - Institut Bauen und Umwelt e.V. Furthermore we meet the high demands of the American LEED v4 program. LEED (Leadership in Energy and Environmental Design) is globally recognized and the most widely used green building rating system in the world. Environmental Product Declarations give the appropriate data basis to represent environmental attributes of a product for its whole lifecycle and include general product-, life cycle assessment- and additional information. Moreover, they are compiled on a basis of criteria, which among others are developed by independent third parties and which are additionally verified independently.

FSC® helps take care of forests and the people and wildlife that call them home.



CE-label confirms compliance with European Standards and is obligatory when selling this product.



The FEP Parquet Refinishable Program is a voluntary certification program administered by the FEP (European Parquet Federation). The program was developed to identify parquet products with sufficiently thick wear/top layers which are suitable for renovation/renewal.



Scheucher parquet floors fulfill the award criteria V1.0 of TÜV PROFICERT-product Interior Certification.





LIVE MORE COLORFULLY. LIVE MORE INDIVIDUALLY.

SPIRITED DIVERSITY. ALLURING VARIETY.

Elegant longstrips in wonderfully balanced dimensions, classic 3-strip with its perfect charm or multifaceted strip parquet - also in extravagant installation patterns such as herringbone, cube and many more: Scheucher offers you numerous, breathtaking installation patterns that can be used to achieve extraordinary floor effects..

Innovatively refined, with pleasant textures and natural colorations, Scheucher gets the maximum effect out of every type of wood and gently embraces nature with these fine finishes.

This results in a spectrum of countless possible combinations.

FLOOR SYSTEMS

Different construction types, dimensions and installation patterns. More technology. More individuality.

With the innovative multi- and 3-layer parquet collections from Scheucher, you can enjoy the full range of options, perfectly tailored to the requirements of today's construction processes.

LONGSTRIPS

AVAILABLE DIMENSIONS:

Longstrips X-Large:

MULTIflor.**11** **NOVOLOC**® 5G **2400** | 11 x 222 x 2400 mm

WOODflor **NOVOLOC**® 5G **222** | 14 x 222 x 2200 mm

or 14 x 222 x 2400

Longstrips Large:

WOODflor **NOVOLOC**® 5G **182** | 14 x 182 x 2200 mm

MULTIflor.**11** **NOVOLOC**® 5G **2200** | 11 x 182 x 2200 mm

WOODflor **NOVOLOC**® 5G **140** | 14 x 140 x 2200 mm

Longstrips Medium:

MULTIflor.**11** **NOVOLOC**® 5G **1800** | 11 x 140 x 1800 mm

MULTIflor.**11** **NOVOLOC**® 5G **1200** | 11 x 140 x 1200 mm

+ POSSIBLE
INSTALLATION IN
THREE WIDTHS

140 182 222

STRIP PARQUET + INSTALLATION PATTERNS

Different lengths and variations make this range a favorite when it comes to individual design in your home.

Strip parquet can not only be laid in a classic way, but also enables numerous installation patterns, which offer almost unlimited freedom of design!

BRICK PATTERN

AVAILABLE DIMENSIONS:

BILAflor® **500** | 11 x 70 x 500 mm

BILAflor® **490** | 11 x 90 x 490 mm

BILAflor® **1000** | 11 x 90 x 1000 mm

MULTIflor.**11** **700** | 11 x 140 x 700 mm



3-STRIP & 2-STRIP-PARQUET

Connoisseurs swear by the sophisticated effect of 3- or multi-strip parquet, which accentuate the wood in a more differentiated and varied way with its fresh appearance. Different gradings are used to achieve subtle effects on the floor.

AVAILABLE DIMENSIONS:

3-Strip:

WOODflor **NOVOLOC**® 5G **182 3-Strip** | 14 x 182 x 2200 mm

2-Strip-Parquet:

MULTIflor.**11** **NOVOLOC**® 5G **1200.OSB 2-Strip**

11 x 140 x 1200 mm



Longstrips from Scheucher are available in wonderfully balanced dimensions to suit any room size. Choosing the right dimensions, the desired type of wood and surface treatment will make your planks a subtle companion to your interior or an absolute highlight in your home.



CHEVRON FLOORING

With Chevron flooring, the parquet strips are beveled at the ends and installed at an angle of 45° or 60° to each other. The resulting herringbone pattern looks even more dynamic than the classic version.

AVAILABLE DIMENSIONS:

MULTIflor.**11** **NOVOLOC**® 5G **500 60°**

11 x 140 x 500 mm / 60°

MULTIflor.**11** **NOVOLOC**® 5G **740 45°**

11 x 140 x 740 mm / 45°

CUBE

AVAILABLE DIMENSIONS:

MULTIflor.**11** **700** | 11 x 140 x 700 mm



HERRINGBONE

At classic herringbone parquet, the strips are installed at a 90° angle to each other at the end. With **BILA**flor® and **MULTI**flor.**11** **700**, different dimensions can also be laid to form a double herringbone and a triple plait.

AVAILABLE DIMENSIONS:

BILAflor® **500** | 11 x 70 x 500 mm

BILAflor® **490** | 11 x 90 x 490 mm

BILAflor® **1000** | 11 x 90 x 1000 mm

MULTIflor.**11** **700** | 11 x 140 x 700 mm

LADDER

AVAILABLE DIMENSIONS:

BILAflor® **500** | 11 x 70 x 500 mm

BILAflor® **490** | 11 x 90 x 490 mm

BILAflor® **1000** | 11 x 90 x 1000 mm

MULTIflor.**11** **700** | 11 x 140 x 700 mm



HERRINGBONE



PARALLEL

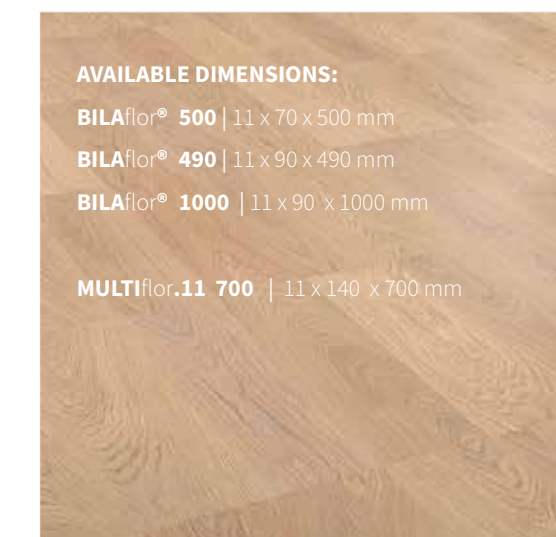
AVAILABLE DIMENSIONS:

BILAflor® **500** | 11 x 70 x 500 mm

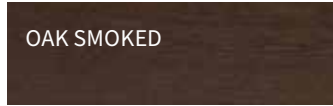
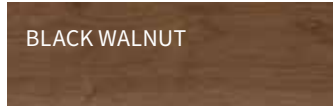
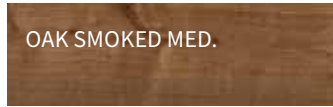
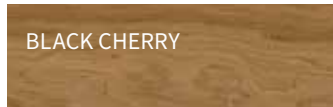
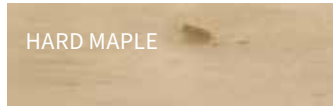
BILAflor® **490** | 11 x 90 x 490 mm

BILAflor® **1000** | 11 x 90 x 1000 mm

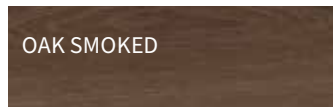
MULTIflor.**11** **700** | 11 x 140 x 700 mm



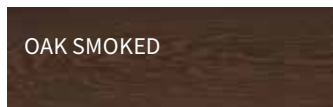
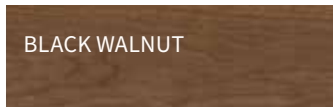
COLORS & WOOD TYPES



NATURA
Naturally transparent



PERLA
Soft shade of white



NATURALE
pure, transparent



BIANCA
Intense white



NEBLA
Soft shade of grey



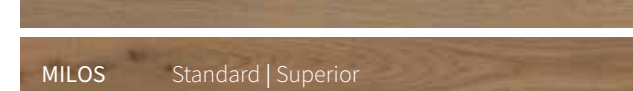
AKZENT
Honey-colored

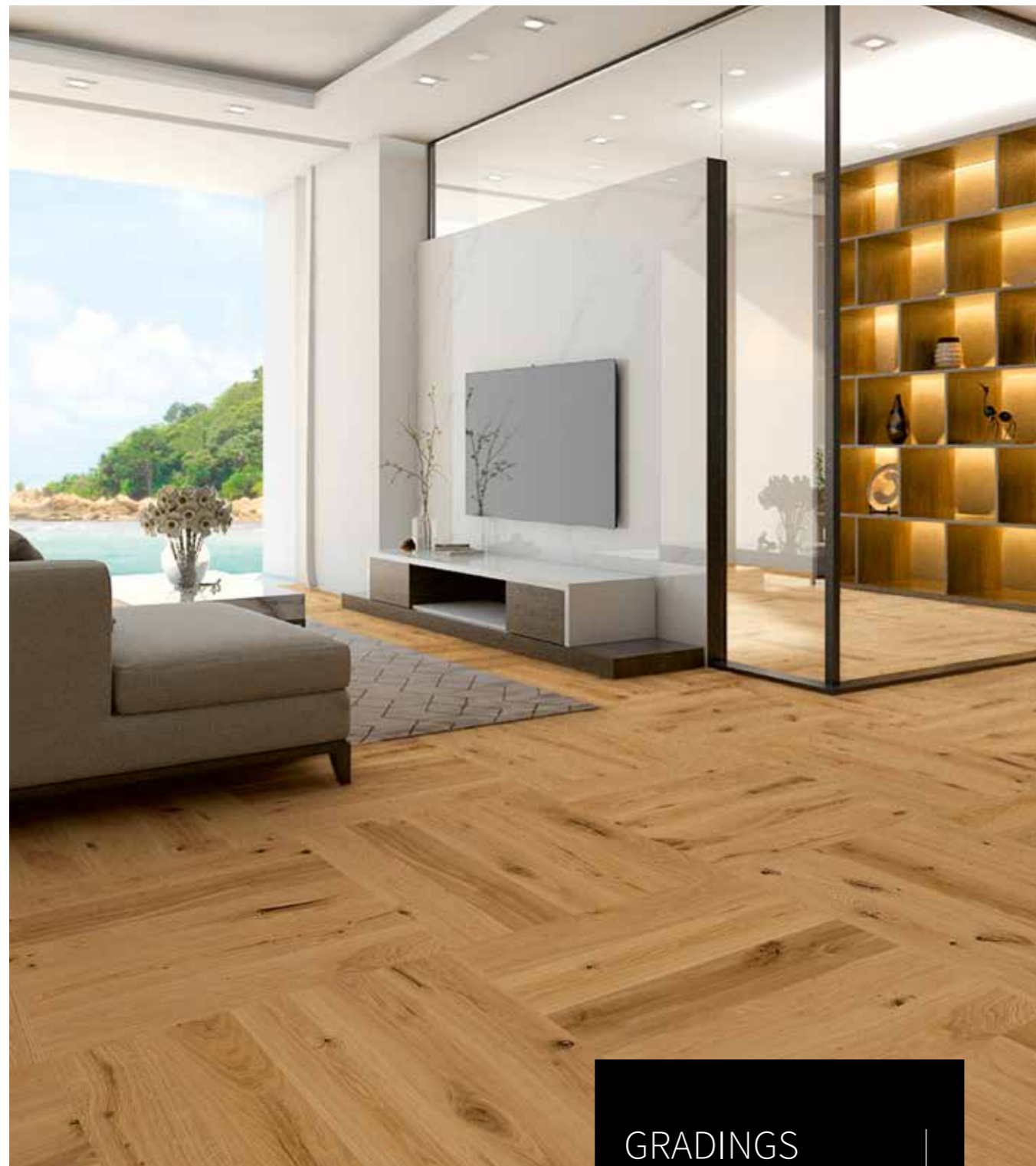
Coming home is a truly uplifting experience.
We walk across those floorboards that mean the world to us...

ELEVATION



TREND COLLECTION





TYPES LIVE

The grading determines the effect of a floor to a large extent and sets individual accents. This creates more harmonious or dynamic effects, from calm and elegant to lively rustic - you decide which character you want to give your rooms.

GRADINGS

SELECT
NATUR
CLASSIC
KNOTTY
COUNTRY*
RUSTIKAL
STRUKTUR
EFFECT



01 SELECT

Haven of peace. Uniform and subtle in terms of colour and growth, this grading is a convincing choice. Small knot points are possible and enliven the overall look.

02 NATUR

Pure nature. A natural growth in combination with natural colour variations and small, visible knots.

03 KNOTTY

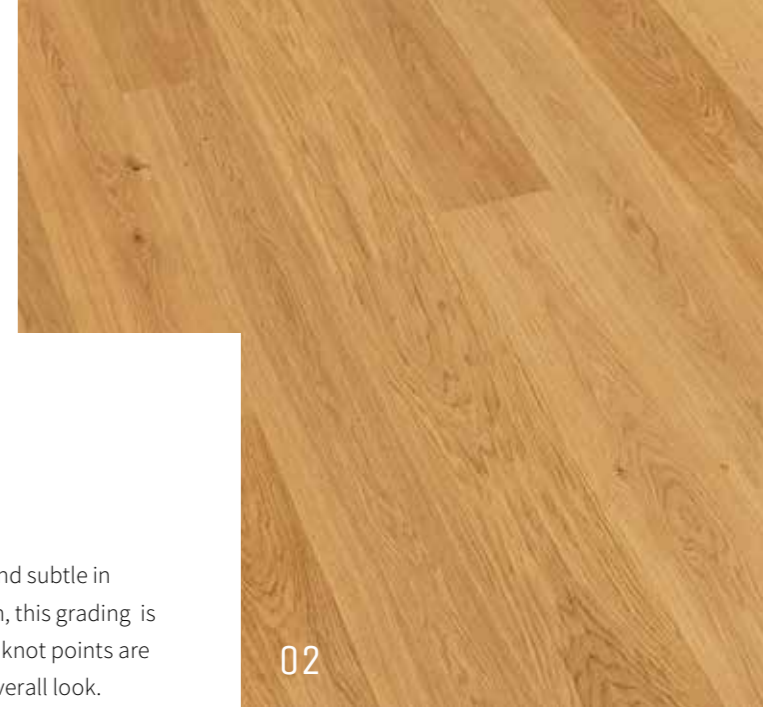
Joie de vivre. Splinter free, natural, and thanks to the many visible knots, this sort ensures tangible joie de vivre.

04 COUNTRY. RUSTIKAL. STRUKTUR. EFFEKT.

Powerful moments. Vibrant, lively and powerful colour nuances, as well as possible knots create a new spirited feeling in your home.

Exciting colours.
Bold textures.

**NATURE PUTS
ON A SHOW.**



02



03



04

MOVING STRUCTURES.

In addition to smooth, sanded parquet, selected types of parquet can be obtained from Scheucher with extraordinary surface structures. This creates a tangible and visible pattern, with an incomparable feel, making the parquet floor appear three-dimensional.

01 VALLETTA

NATURAL- brushed with bevel on 4 sides

With our parquet structure Valletta, the wood is brushed in the direction of the grain and the soft parts are removed. What remains are the hard annual rings of the wood. This gives your parquet a more natural appearance, impresses with its unique haptics and with a great feeling of walking. The structure hides dirt and small damage to a certain extent.

02 VALSEGA

CHARACTERISTIC - bandsawn and brushed

Valsega ensures a characterful and distinctive surface impression. The wood is brushed lengthways and across the grain. The resulting saw cut haptics impresses with its great touch and naturalness. At Valsega surfaces, dirt and minor damage are concealed to a certain extent too.

03 TOSKANA

EXCEPTIONAL - scraped

The slightly waved, irregular surface at Toskana lends your parquet flooring an exceptionally antique sense of touch as well as an incomparably pleasant feel of walking.

04 BEVEL

2- and 4-sided

With the 4-sided bevel surface structure, the parquet elements are given bevelled edges on all four sides, which allows the structure of the individual elements in the overall arrangement to stand out. With the 2-sided bevel surface structure, the bevelled edges are only on the two longitudinal sides.

SANDED PARQUET

Sanded parquet floors are sharp-edged and have a smooth, sealed or oiled surface.



Tangible,
characteristic surfaces.
Experience them just as they are.
Feel the differences.
See the differences.

STRUCTURES

VALLETTA - BRUSHED WITH BEVEL
VALSEGA - BANDSAWN; BRUSHED
TOSKANA - SCRAPED
BEVEL 2 - / 4- SIDED

REFINED SURFACES.

With the exception of classic lacquered surfaces with their special degree of gloss, there are few visual differences between an oiled and a matt lacquered surface. So what is going on in the „background“ and which finish is the right one for my home? Every surface finish has its advantages and disadvantages and should be chosen to suit the lifestyle and requirements of all residents.

SEDA



READY TO USE, DEEPLY IMPREGNATED OILED/WAXED SURFACE

The natural surface refinement according to centuries-old traditions with high-quality oils and waxes preserves the original fresh character of the wood and impresses with a velvety matt surface with natural grains and intense wood color. The open-pored finish with breathable materials ensures a particularly healthy indoor climate and conjures up a touch of nature in your own living space.

A special advantage of SEDA floors:

A special plus point for SEDA floors: If necessary, scratches or small damage can also be partially repaired and re-oiled without any problems. Therefore, they are ideally suited in even highly stressed areas, as maintenance and repair are easy and the floor can be kept in an optically perfect condition all the time. The surfaces are also very resistant to common household chemicals.

HIGHLIGHTS

- + Natural oils and waxes
- + Breathable and moisture-regulating
- + Healthy indoor climate
- + Impregnating depth protection
- + Water and dirt repellent
- + No static charge
- + Partial repair capability

MATTE SURFACE. BRILLIANT TECHNOLOGY.

MATT UV-LACQUERED SURFACES USING THE
INNOVATIVE EXCIMER PROCESS



TENSEO X-MATT MATT | GLANZGRAD 8 - 10

Also TENSEO X-MATT is a solvent-free UV lacquered surface that is applied using the excimer technology and process. TENSEO X-MATT offers the same characteristics as PUROTEC and only differs in its lower degree of matting. So if you decide for a matt lacquered parquet floor, Scheucher offers you the option of choosing between the two variants and enjoying the unique advantages of this state-of-the-art technology from now on.



TENSEO CLASSICO

UV-SEALED SURFACE | GLOSS LEVEL 28 - 30

This, up to 7 layers consisting sealing system ensures your wooden flooring gives a special flair to any room. The beautifully silky sheen gives an exclusive look to the wood while at the same time making it resistant to damage and thereby extends the life of your parquet flooring

PUROTEC

NATURALLY DEEP MATT | GLOSS LEVEL 4-5



This natural matt UV - lacquered surface without the use of matting agents gives you the optical illusion of untreated wood, whilst functionally providing your parquet with an even higher resistance and minimized color changes.



WATCH VIDEO

HIGHLIGHTS

- + Natural matt optics
- + Water and dirt repellent
- + Solvent-free, healthy indoor climate
- + Easy to clean
- + Practically maintenance-free
- + Excellent chemical resistance
- + Exceptionally scratch- and abrasion resistant
- + Minimized color change (UV)
- + Anti-footprint effect
- + Sandable and restorable

- + Silky sheen
- + Water and dirt repellent
- + Chemical resistant
- + Environmentally friendly and easy to clean
- + Higher wear class
- + Suitable for sports halls

THE PARQUET OF THE FUTURE?

WITH THE UTMOST CONVICTION

So in one of the most modern prefabricated parquet factories in Europe, one of the most innovative parquet surfaces is now produced - 100% in Austria, sustainably, with our in-house photovoltaic system and by a constant team of specialists who love wood and therefore stand for the high quality and precision behind our high-tech machinery. Each parquet board is carefully produced and receives numerous layers of high-quality varnish before undergoing the final step with the innovative and solvent-free UV varnish excimer technology.

In this step, the parquet boards pass through an oxygen-free tunnel where an excimer lamp emits intense UV light at a wavelength of 172 nanometers. This results in the formation of a micro-folded varnish film as a very thin skin on the surface. The subsequent curing process leads to a continuous, strongly micro-folded, and perfectly cured layer. This effect ensures that incoming light is scattered in all directions, which our eyes perceive as a particularly aesthetic, deep matte look. This matte finish not only exudes sophistication but also prevents footprints and reduces slipping.

Let's stay with the light for a moment. And on the sunny side.

The importance of sufficient light sources, especially through floor-to-ceiling windows, has become indispensable in modern architecture. As a natural material, however, wood reacts to daylight by discoloring or darkening over time. The wood color intensifies, and the natural touch deepens. This naturally beautiful process is simply part of any use of wood, and the most significant color change usually occurs in the first few weeks after installation. Nevertheless, we want to maintain an even appearance of our hardwood flooring as long and as well as possible and avoid too strong sunlight incidence for example by shading. With the new PUROtec surface innovation for your Scheucher parquet, you now have a particularly good protective measure, because the unique manufacturing process of the high-quality, deep-matt UV varnish surface guarantees that the influence of UV light and the associated color change of your parquet floor is minimized, and the original impression is retained. So hello Sunshine - here comes PUROtec, your parquet flooring with minimized color change under UV-light.



SPOTLIGHT ON

MATT SURFACE. BRILLIANT TECHNOLOGY.

Pure wood paired with an outstanding technology. To put it in a nutshell: this is how our natural matt PUROtec parquet flooring is created. Thanks to its special optics it even leaves the impression of untreated wood.

This look brings out the original character of the natural product and makes your home something very special, while numerous functional benefits of the protective and absolutely unique surface finish quietly do its work.

Naturally solvent-free and without the use of matting agents.

DON'T WASTE TIME AND LIVE LIFE TO THE FULLEST

Wood is a natural product; it grows with us - quietly and yet so strongly over decades in the forest and lives with us and our families - after the most careful and respectful processing - as a Scheucher wooden floor of the highest quality in our homes. We treat this valuable raw material with care, but - like us - it can sometimes be subject to more stress, or like our children - sometimes be dirty or have the odd scratch. So here and there it also needs a more thorough cleaning, care, or if necessary - repair.

With the unique PUROtec parquet surface, we protect our wooden floors as never before against external influences such as scratches, abrasion, dirt and chemicals. This also makes cleaning easier than ever before and practically eliminates the need for maintenance.

Let's leave footprints only where memories are to be created!

You can confidently walk on the parquet floor for decades - but you hardly leave any footprints, neither in terms of CO2 nor directly on the parquet. PUROtec from Scheucher is unique on the parquet market. It combines the appearance of a deep matt surface - in line with the current trend - with numerous functional benefits, such as an anti-footprint effect. The innovative process makes the parquet surface insensitive to footprints and also ensures extreme robustness in other respects. Footprints therefore remain completely invisible and stains can also be removed very quickly and easily. So it is absolutely suitable for everyday use!



ALL ABOUT
PUROTEC





WOOD TELLS STORIES FROM LIFE.

FOR YOUR LIFE.

Parquet is more than just a material – it is a carrier of stories and memories.
Each piece of wood tells its own unique story:

The rings of a tree trunk reveal the age of the tree, its years of growth, and the challenges it has overcome. Each knot, grain, and irregularity holds a trace of nature and time. When this wood is turned into parquet, it brings the stories of its origin into the room. It connects the past and the present, creating an atmosphere that speaks of the vitality and resilience of nature.

Wood grows, lives, and changes – it reminds us that we, too, are part of a greater whole, one that writes stories in the flow of time, stories that will be told across generations.



01

OAK SELECT

01 **WOOD**flor NOVOLOC® 5G 182
Oak Select Natura

02 **MULTI**flor.11 NOVOLOC® 5G 740 45° -
Chevron flooring
Oak Select Natura



Oak parquet in the grading Select radiates a special elegance and clarity. The uniform, uninterrupted grain of the wood creates a harmonious appearance, giving the room a calm and refined feel. Barely visible knots or irregularities convey a subtle yet distinct beauty that complements various interior styles. The subtle texture creates a pleasant atmosphere, providing a sense of warmth and coziness in both modern and classic spaces.



PROJECT
**DREAMILY
 RESTORED OLD
 BUILDING WITH
 CHEVRON
 FLOORING**

Installed productt:
MULTIflor.11 NOVOLOC® 5G 740 45°
 Oak Coarse Seda



CHRISTINE BUZZI

Christine Buzzi is a successful interior designer from Vienna who truly makes every project „her project.“ She approaches the execution with the same meticulous attention as if it were her own.

In addition, she has a network of similarly „poled,“ highly reputable professionals like Scheucher, with whom Christine has been working successfully for years – all for the benefit of her customers.

Besides the quality, one of the many reasons is that Scheucher, through its own research and development department, quickly tests new ideas and individual requirements, consistently creating unique custom-made pieces at the client’s request – as seen here in the city center of Vienna, where Christine Buzzi transformed a still-under-construction old apartment into a one-of-a-kind, modern yet classically restored old-style home.



The apartment covers about 230 m², most of which is equipped with parquet flooring. The exclusive Chevron perfectly complements the created style and creates an incredibly delicate and harmonious transition from the floor to the interior.

Upon closer inspection, the parquet floor, like each individual piece of furniture, is an absolute highlight.

Chevron flooring is available at Scheucher in a variety of wood and color combinations, so the exciting parquet pattern can also match your personal style. In two wonderfully balanced dimensions with different angles, the parquet models look exceptional not only in classic spaces but also in modern environments, shining with a refined linear, geometric style that also creates the illusion of more floor space.

OAK NATUR

01 WOODflor NOVOLOC® 5G 182 Oak Natur Nebla



NEBLA

A softly gray parquet floor, like the one achieved with the color variant Nebla, is versatile and creates a modern, calm, and elegant living atmosphere. The subtle color of the wood blends harmoniously into various interior styles and gives the room a cool yet inviting vibe. The subtle gray tones gently reflect the light, making the room appear larger and brighter. At the same time, the wood retains its natural warmth, creating a balanced harmony between freshness and coziness. This type of flooring can be combined with both bold colors and more muted tones, allowing it to adapt flexibly and exude timeless elegance.

COLORS



NATURA

PERLA

BIANCA

AKZENT



COLORS PLAY IN THE ROOM.

Scheucher parquet offers the creative freedom to shape your home exactly the way you desire. The unique variety of wood types and colors allows your parquet floor and living spaces to become a reflection of your personal vision.



COLORS LAUGH OUT
LOUD IN DIFFERENT
NUANCES. COLORS
LIVE IN DIVERSITY.

- 02 **BILAflor® 490** - Herringbone pattern
Oak Natur Natura
- 03 **WOODflor NOVOLOC® 5G 222**
Oak Natur Akzent
- 04 **MULTIflor.11 700** - Herringbone pattern
Oak Natur Perla



#HOMESTORY

NEW CONSTRUCTION MEETS HERRINGBONE PARQUET

We had the pleasure of visiting Michaela and Manuel in their dream home in the quiet, family-friendly hillsides of southern Styria. They gave us a little insight into their interior life, including their large-format herringbone parquet flooring from Scheucher's MULTIfloor.11 700 series - a real eye-catcher that perfectly rounds off Michaela's visible affinity for interior trends and classic, straightforward design.

Installed product:
MULTIfloor.11 700 - Herringbone pattern
Oak Natur Valletta Seda Bianca

PLANNING AND FEEL-GOOD FACTORS

After careful planning, Michaela and Manuel made their dream home come true when they moved in last May. While Michaela is always on the trail of the latest living and decorating trends and is gradually integrating more and more stylish details into her home, the young couple has been primarily enjoying cozy hours together in their new home in the countryside since moving in. The house gives you exactly the feel-good factors that are particularly important to the two: sufficient daylight, a natural ambience and tranquility.

The natural ambience and tranquility is reflected both visually and functionally in the chosen parquet flooring: the selected, calm grading provides a balanced and coherent overall picture - at the same time, in this picture, each individual parquet strip is unique, drawn by nature and, on closer inspection, equally always gives the eye a little variety. The natural properties of the wood and the oxidative oiled-waxed parquet surface ensure a healthy living environment.

The floor-to-ceiling windows with views of the greenery allow a great deal of light to enter the living spaces of the bungalow, which enhances the quality of life and connects the outdoor area with the living space. Also, the effect of the parquet flooring and herringbone pattern changes throughout the day with the naturally changing incidence of light, always creating a varied mood.



CHOOSING THE PARQUET FLOORING

From the entrance area, a modern industrial door leads directly into the open-plan living and dining area, for which the couple opted for Scheucher's Multiflor 700 in Oak Natur Valletta Seda Bianca - installed as an herringbone pattern. The intense white oiled parquet's creamy hue nestles against the light-colored seating, and the wood provides a pleasantly warm contrast to the black kitchen furniture and sophisticated black details. The unique construction and low overall height of the parquet, immediately ensured easy connection to the tiles in the vestibule. The larger format of these parquet strips fits perfectly into the spacious living room and, together with the large format tiles, creates a perfectly proportioned overall picture.

The great wood stove separates the kitchen and living room and also brings an additional natural factor into the minimalist modern living space thanks to the stored wood. However, heating costs can generally be kept lower thanks to the ingenious design of MULTIfloor.11 700 in combination with underfloor heating, as the heat can reach the surface particularly quickly.



THIS IS HOW MICHAELA
BECAME AWARE OF
SCHEUCHER

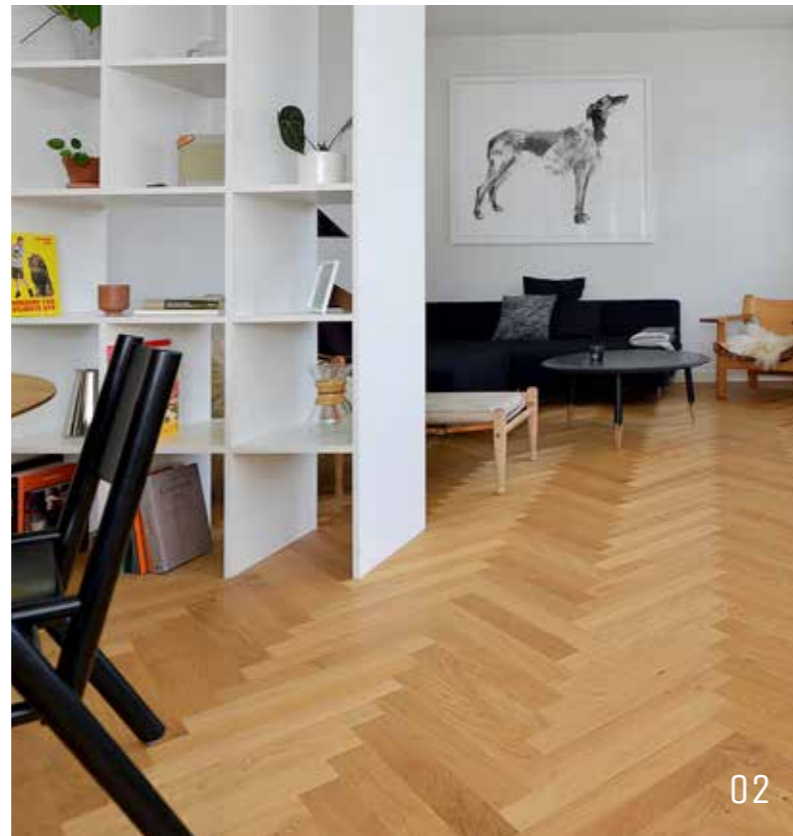


” Our living style is timelessly elegant with a touch of a period’s building charm, so I knew in advance that only a herringbone parquet floor would be the right choice for us! “



01

01 **BILAflor® 1000** - Herringbone pattern
Oak knotty Perla



02

02 **BILAflor® 500** - Herringbone pattern
Oak knotty Natura

03 **WOODflor NOVOLOC® 5G 140**
Oak knotty Nebla

04 **MULTIflor.11 NOVOLOC® 5G 1200**
Oak knotty Akzent

Just as the sun awakens our nature every day, the warm, honey-colored shade Akzent shown here spreads energy and good vibes in your home day after day.



AKZENT

COLORS



NATURA

PERLA



BIANCA

NEBLA

A knotty parquet floor gives a room a natural, lively aura that radiates both warmth and character.



03

The subtle yet visible knots in the wood surface bring an authentic, organic touch to the room, making it feel particularly inviting and cozy. In contrast to completely uniform floors, the slightly knotty character of the wood helps create an individual and natural atmosphere.

OAK KNOTTY



04



” PARQUET HAD TOP PRIORITY IN SPATIAL PLANNING “

#HOMESTORY INSTALLED TO STAY

Installed product::
WOODflor NOVOLOC® 5G 222
Oak knotty Valletta Seda Natura

Back home - for the long term, or actually forever. This homestory shows you insights into the life of Vera, Lukas and little Loris and how they have finally arrived in their old / new home with durable products like their Scheucher oak flooring.

HOW IT ALL BEGAN

Vera and Lukas started the adventure of house planning in their city apartment in Graz, already at that time, but still as a belly dweller, always with them - their now 2-year-old son Loris. Dog Heidi was also allowed to stick her nose into this matter from time to time. The two are two of many reasons why the young couple wanted to fulfill the dream of their own four walls in Vera's home community in the countryside.

Read on to find out how this „coming home“ worked out for the three of them, what is important to them when it comes to living and what role Scheucher Parquet plays in this.

MULTITASKING MADE EASY

It's not easy to concentrate on a complete house construction with over 200 m² in addition to all the thoughts about the soon-to-be new family member. How fortunate that acquaintances were just renovating their floor and Vera and Lukas became aware of Scheucher Parquet along the way. With the help of the online Parquet Finder, Scheucher subsequently provided the two with a particularly practical source of inspiration, as they were already able to virtually test in their unfinished house which parquet flooring would have its effect in the open and light-flooded bungalow.

After ordering a few free hand samples via the Parquet Finder, the choice was made: a large-format plank will come into its own in the spacious living and dining area and should also find its place in the hallway and the other rooms to get an harmonic overall look.



„BUT FIRST PARQUET“

For Vera and Lukas it was clear from the beginning: the choice of the parquet floor has top priority, because it will certainly outlast most of the furnishings. The two therefore took their cue from the look of the parquet floor and then chose their furnishings and also the color of the wooden windows. An oak plank with a transparent oiled/waxed surface looks particularly good, because the natural color scheme can be perfectly combined with current furniture, is timeless and underlines the natural living factor that Vera and Lukas particularly wanted and created with wood and plants as well as plenty of daylight.

A positive side effect: In addition to their controlled living space ventilation, the large-area wooden floor also ensures an optimal indoor climate and promotes the health of the young family. Everywhere to be found and an equally important feel-good factor are sufficient seating-accommodations - predominantly in the currently absolutely trendy velvet material. It is not only soft and noble, but also always brings in a touch of retro - a style that Vera, mixed with industrial and minimalism, wanted for her home. The selected plank WOODflor NOVOLOC 5G 222 in Oak knotty Natura Valletta Seda shows itself expressive, but at the same time balanced restrained to the eye-catchers in the house.

NOTHING BEATS PERSONAL EXPERIENCE

VERA AND LUKAS KNOW THE PROS AND CONS OF PARQUET, LAMINATE, TILES AND VINYL

But back to naturalness - this factor should not only be fulfilled visually, but also functionally. Having lived in five different apartments before, the two knew the pros and cons of parquet, laminate, tiles and vinyl and definitely do not regret their decision for a real natural product - a parquet floor.

Since their son Loris will also spend most of his time on the floor in the new house, it was especially important to the two of them to avoid toxic fumes or pollutants that can emanate from the floor. Therefore, they chose not to use other flooring materials and opted for parquet flooring throughout most of the house. The natural flooring with the oxidatively oiled/waxed surface is and remains open-pored, breathable, convinces with a velvety matt surface and thereby grants a particularly healthy room climate. Only to the anteroom and the wet rooms you'll find a gentle transition to a micro-cement floor.

SLIPPERS ÁDE - A PARQUET FLOOR BRINGS A PLEASANT FEELING OF WALKING

Also the haptics of the floor was important to Vera and Lukas: it should be warm and not too slippery, because nobody likes to wear slippers in their house. Their Scheucher parquet, with its brushed Valletta surface, offers an incomparably walking sensation and ensures pleasantly warm feet compared to tiles or other floor coverings. This invites to walk barefoot and also the pets - dog Heidi and the two cats do not slip on the floor - a benefit for all. Should there ever be a scratch or dent in the floor, that's okay with Vera and Lukas because the floor lives with them and their family. What's more, with an oiled surface, these can also be repaired particularly easily.

A sustainable lifestyle is simply part of Vera and Lukas' way of life. The entire house was designed with long-term, high-quality solutions in mind - the floor should also last for generations - and the quality of Scheucher Parquet is absolutely perfect for the two of them.

The young family feels truly comfortable their new/old home.



MORE IMPRESSIONS:



A parquet floor in a more rustic grade acts as a natural eyecatcher, showcasing the beauty and uniqueness of the wood in all its splendor. The distinctive knots and irregularities in the wood tell the story of the tree and give the room a lively, authentic atmosphere.

The special appearance of the Oak Country adds a certain warmth and coziness to the room. The floor blends in a fascinating way with modern living concepts, creating a harmonious connection between nature and design.

Especially in larger, open spaces, it creates an inviting, cozy ambiance without feeling overwhelming. The natural texture of the wood ensures that the room feels lively and dynamic without losing its elegance. This effect unfolds particularly well when paired with neutral wall colors or understated furnishings that allow the floor to fully express its impact.

OAK COUNTRY

02 **WOOD**flor NOVOLOC® 5G 182
Oak Country Natura



01 **WOOD**flor NOVOLOC® 5G 140
Oak Country Nebla



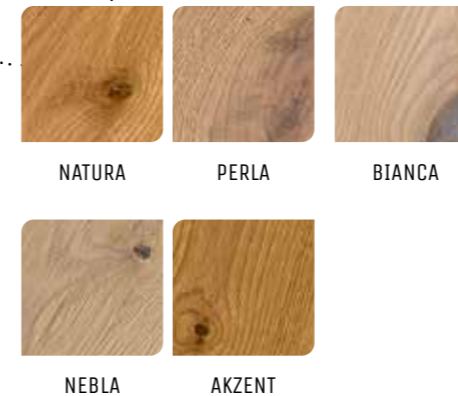
03 **MULTI**flor.11 NOVOLOC® 5G 2400
Oak Country Bianca

An intensely white parquet floor like our Oak Bianca is an exquisite choice for spaces that should radiate freshness, brightness, and elegance.

White is considered a neutral color, which allows it to harmonize well with itself as well as with all other shades and various interior styles. Its soft color makes the floor feel airy and visually opens up the space. The light surface reflects the light and makes the room appear even larger and more inviting – an ideal choice to create a sense of lightness and clarity.

The floor serves as a stylish backdrop that puts other design elements in the spotlight. While furniture and decorative elements stand out even more, the floor remains a subtle yet powerful part of the overall concept.

COLORS



PROJECT
**RATSCHER
LANDHAUS**

MULTIflor.11 **NOVOLOC**® 5G 1200
Oak Country sanded Seda Natura
Copyright photo: Karin Bergmann

WELL-SHAPED COMPACTNESS

The smallest version of our longstrips impresses with its well-proportioned compactness and distinctive spirit. Discover the balanced floor impression that can be achieved with **MULTI**flor.11 **NOVOLOC**® 5G 1200 in this story.



#HOMESTORY

MODERN, NATURAL CHIC STYLE



Nowadays, you no longer have to choose between stylish and sustainable. The trend towards natural living is progressing steadily, you might even think it's part of good manners nowadays and should become an absolute must in view of the climatic problems on our planet. In this new parquet story we show you how this young family has brought the trend to their home and made even the smallest corner an absolute eye-catcher.

HOW DID THE FAMILY BECOME AWARE OF SCHEUCHER PARQUET?

During the interview with Verena, she emphasized the familiarity and quality of Scheucher, as many beautiful houses have already been built in her circle of friends and finished with Scheucher parquet.

The online parquet finder, including a free sample order, was also very helpful for the two of them and was used very frequently during the decision-making process. The final consultation and installation was, of course, carried out by one of our competent partners - Verena and Lukas took the time to discuss the desired type of wood, surface and production method together on site - after all, parquet is and remains a haptic product and requires professional and desired advice.

A real parquet floor, with a wear layer of approx. 3.6 cm as from Scheucher, should last for generations. Now come back to the beginning - natural living with high-quality and therefore long-term, repairable products says our throwaway society the fight and gives us a real and unique feeling of living - you can sit back and enjoy without a guilty conscience - like like these three dear people in their personal feel-good oasis in the green!

GOOD VIBES & GOOD WOOD ONLY

The „Wood House“ - that's what Verena lovingly calls the newly buildt home in Styria. Not only their wooden floor, but also numerous other wooden elements do justice to the name. But first, however, let's get to the most effective, and for us, of course, the most important residential part: their Scheucher parquet floor! You will find the highest quality oak parquet with a natural oxidative oiled and waxed surface. Our longest strip in our WOODflor NOVOLOC 5G 222 Oak Country Seda Natura version unfolds itself and its positive effect on the indoor climate on about 160 m² of living space. Except for the wet areas such as the bathroom and toilet, the oak parquet flooring was used in all rooms, including the anteroom and kitchen.

Not only mighty wooden beams on the open ceiling in the living area, but also various smaller accents such as kitchen elements create the perfect counterpart to our XXL plank on the floor. The magnificent view of nature and lots of light also make the open living area an absolute favorite place and the family center of the whole house.



Installed product:
WOODflor NOVOLOC® 5G 222
Oak Country Valletta Seda Natura

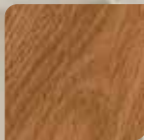
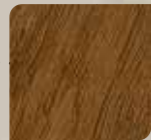
Son Vincent and his friends keep Verena and Lukas on the go day in and day out - most of the time in his specially designed play corner. Running barefoot, which is so important for children, is even more fun on the brushed Valletta parquet surface.



It's not just the appearance of the parquet that matters; it should also be durable, healthy for the living environment, and repairable. The young family chose the parquet not only because of the large oak windows but also because of its living biological and technical properties. To emphasize the natural feel of the home even more, our Country grade was selected - numerous knots and vibrant color nuances remind of the powerful strength of an entire tree. Modern and clean accessories complement the lively look of the parquet floor - here, less is more!



NATUR



COUPAL

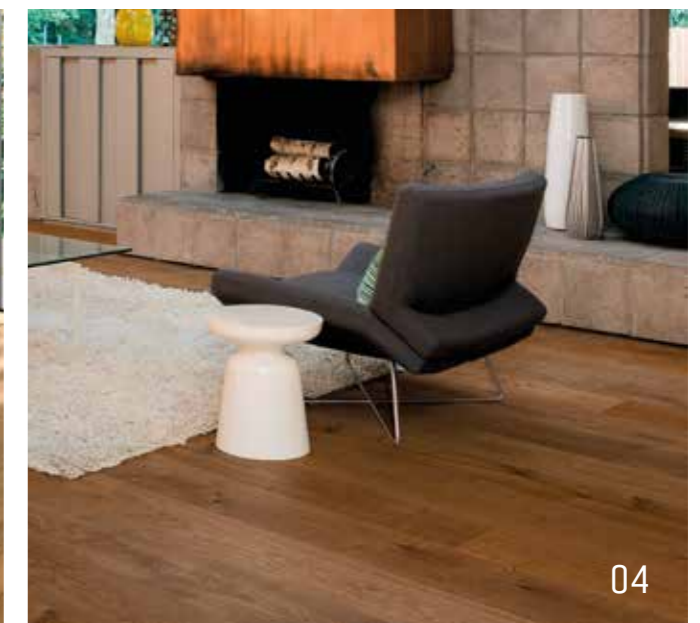
01



02



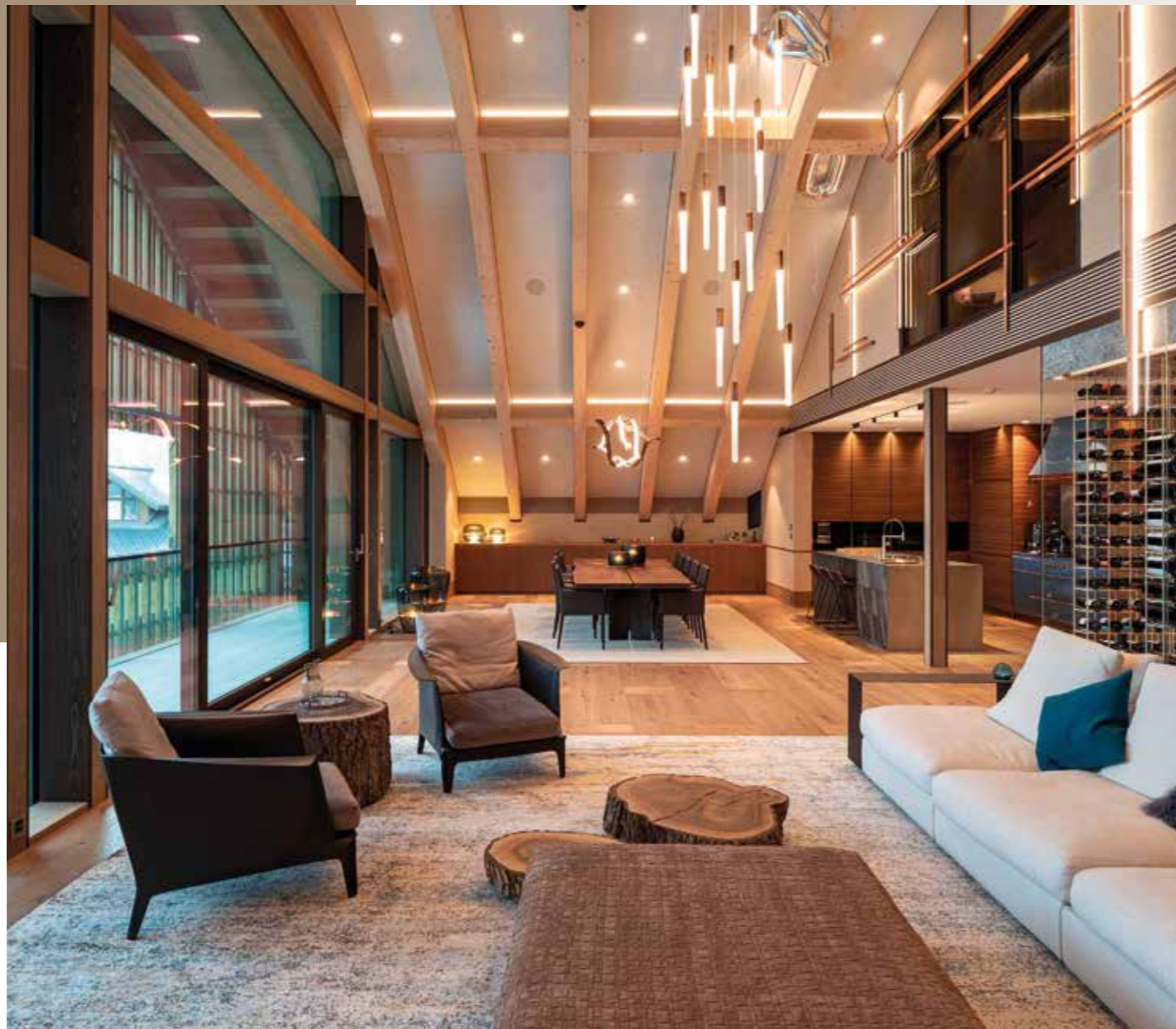
03



04

OAK STEAMED

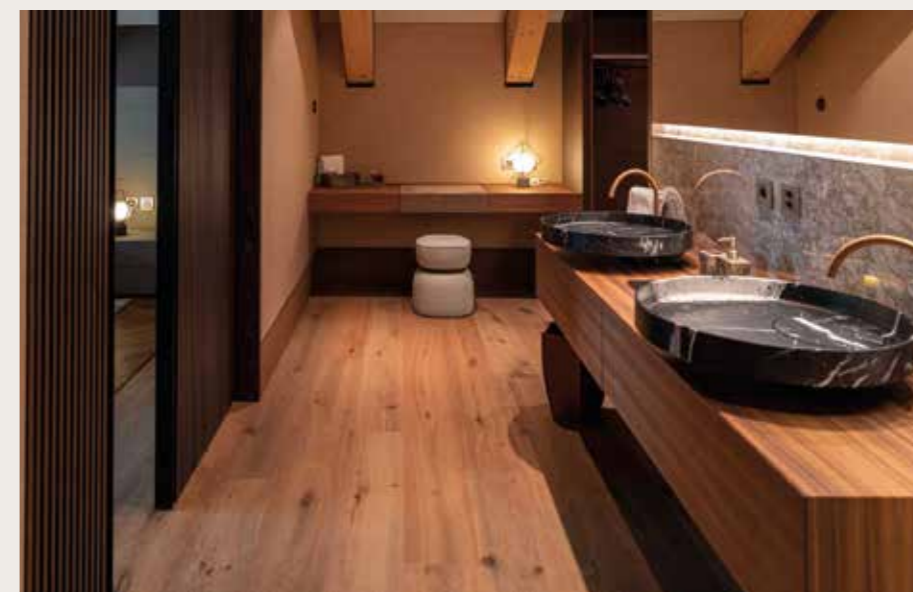
- 01 **MULTI**flor.11 **NOVOLOC**® 5G 740 45°
Oak steamed Natur Natura
- 02 **BILA**flor® 500
Oak steamed Natur Natura
- 03 **MULTI**flor.11 **NOVOLOC**® 5G 1800
Oak steamed Natur Natura
- 04 **WOOD**flor **NOVOLOC**® 5G 182
Oak steamed Coupal Natura



PROJECT
**PENTHOUSE
 SWITZERLAND**

MULTIflor.11 **NOVOLOC® 5G 2200**
MULTIflor.11 **700 Herringbone pattern**
 Oak steamed Coupal intensively brushed
 Seda Pure strukturbetont

Copyright: Marco Sieber Fotografie



A MAGNIFICENTLY RUSTIC COMBINATION
 OF LONGSTRIP AND HERRINGBONE PARQUET

To achieve this luxurious alpine-chic look in this private residence in Switzerland, a wide range of possibilities from Scheucher was utilized: The interior designers not only combined two dimensions and installation patterns – longstrip and herringbone parquet – but also used special effects in the surface finishing – in both texture and color.

Scheucher parquet sets no limits to your individuality.



PROJECT

FEINKOSTEREI SCHWARZHIRSCH

WOODflor NOVOLOC® 5G 222
Oak steamed Coupal Valleta Seda Natura

AUSTRIA'S CUISINE IN MINIATURE MEETS SCHEUCHER'S LONGEST PLANK

According to the motto „Experience Austria“, the Feinkosterei Schwarzhirsch offers cold and warm, typically Austrian dishes in miniature form. However, when it came to selecting the flooring, they chose 100% Austrian quality, but definitely not in miniature: the exciting restaurant at Vienna's Judenplatz is entered on one of our largest dimensions!

The floor harmonizes perfectly with the chosen interior and creates the optimum basis for this special old-viennese atmosphere.





01



02



03



04

NATUR



COUNTRY

BLACK WALNUT

- 01 **MULTI**flor.11 NOVOLOC® 5G 740 45°
Chevron flooring
Black Walnut Natur Natura ©Hyatt Regency
- 02 **WOOD**flor NOVOLOC® 5G 182
Black Walnut Country Naturale
- 03 **BILA**flor® 500 - **Herringbone pattern**
Black Walnut Struktur Natura
- 04 **WOOD**flor NOVOLOC® 5G 182
Black Walnut Natura Naturale

Dark parquet, like our Black Walnut, brings a tastefully subdued elegance to rooms and fascinates with its mysticism.

With its rich color palette of medium brown tones, as well as yellow, olive, or red, and its characteristic grain, each room is visually enhanced. The natural beauty of the wood creates a cozy atmosphere and conveys both warmth and luxury. In addition, walnut parquet has a timeless elegance that fits perfectly in both modern and classic interior styles. Its intense color can provide a pleasant contrast in light rooms, while in larger, darker spaces, it creates a cozy yet stylish atmosphere. Overall, walnut parquet is an excellent choice for those who want to add character and a high-quality, natural appeal to their space.

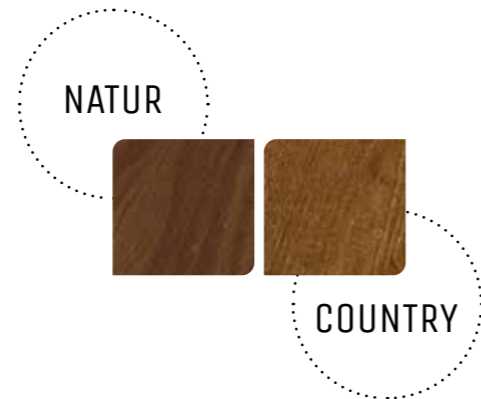
EFFEKT



STRUKTUR

OAK SMOKED MEDIUM

- 01 **WOODflor NOVOLOC® 5G 182**
Oak smoked Medium Natur Natura
- 02 **WOODflor NOVOLOC® 5G 182**
Oak smoked Medium Natur Natura
- 03 **WOODflor NOVOLOC® 5G 182**
Oak smoked Medium Country Natura



With its warm, balanced color, parquet in oak smoked medium offers a perfect balance between lightness and depth, making it pleasant in both light and darker rooms.



- 04 **BILAflor® 500**
Oak smoked Medium Natur Natura

The great advantage is its adaptability: The parquet can be effortlessly integrated into various interior styles – from classic and rustic to modern or Scandinavian. The warm wood color harmonizes beautifully with white, gray, or muted tones on walls and furniture, creating a cozy, inviting atmosphere. At the same time, the medium-brown wood adds a touch of naturalness without being overpowering.



02



03

OAK SMOKED

Smoked oak parquet brings a particularly refined and dramatic presence to any room. The dark, deep brown hue created by the smoking process gives the floor an intense and distinctive look. These bold tones make the room appear visually structured and lend it a luxurious, yet warm atmosphere.



04

- 01 **BILAflor® 500 - Herringbone pattern**
Oak smoked Natur Natura, Foto: © Duka
- 02 **WOODflor NOVOLOC® 5G 182**
Oak smoked Natur Perla
- 03 **MULTIflor.11 NOVOLOC® 5G 740 45° - Chevron flooring**
Oak smoked Natur Natura
- 04 **WOODflor NOVOLOC® 5G 182**
Oak smoked Natur Natura Foto: © Aiola Living Hotel

COLORS



NATURA

PERLA

PROJECT

INTERIOR DESIGN ON THE „WILD(S) SIDE

WOODflor NOVOLOC® 5G 182
Oak smoked Natur Natura,
Copyright photo: Janis Nicolay

Cool, classic, or versatile – there are many words to describe the work of Canadian interior designer Peter Wilds. He frequently uses Scheucher parquet and describes it as follows: „The neutral but wide-ranging color palette of Scheucher’s hardwood is a beautiful foundation for creating unique and personalized spaces.“ In this project, Peter used four longstrip in oak smoked as a warm backdrop for family-friendly living in this bright home in Vancouver.

Peter describes the space as follows: „The rich chocolate tones of the hardwood beautifully offset the clean lines of this modern kitchen.“



MENORCA

BRAC

SANSIBAR

SVLT

RÜGEN

BAHAMAS

IBIZA

ELBA

UFENAU

PAROS

MILOS

GOZO

EVIA

KRETA

MOOREA

HAWAII

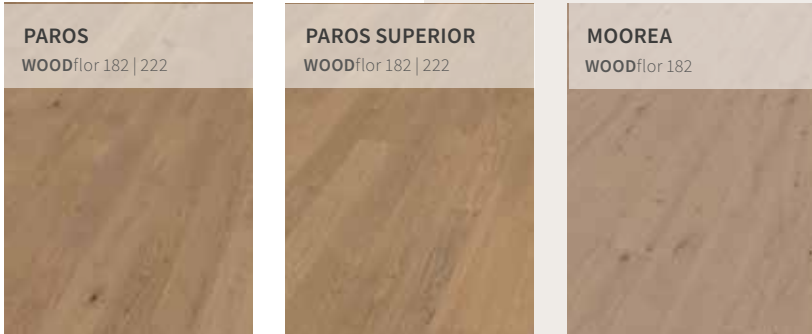
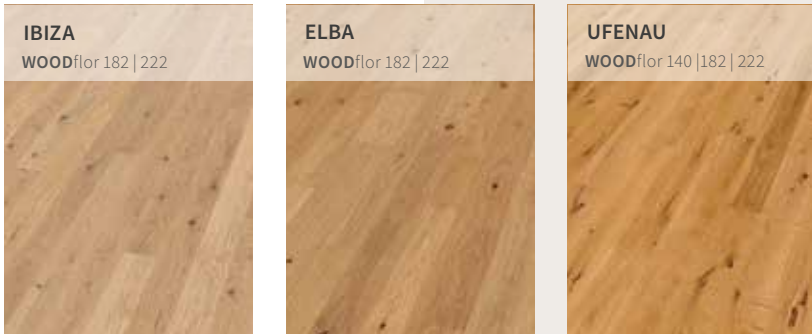
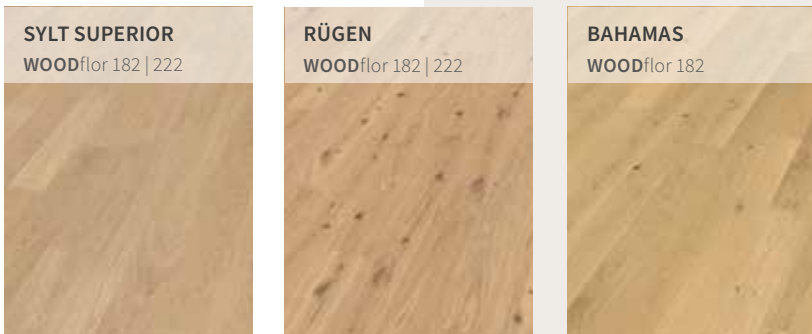
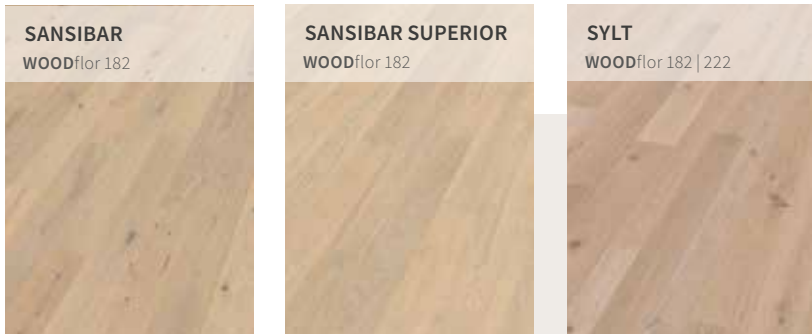
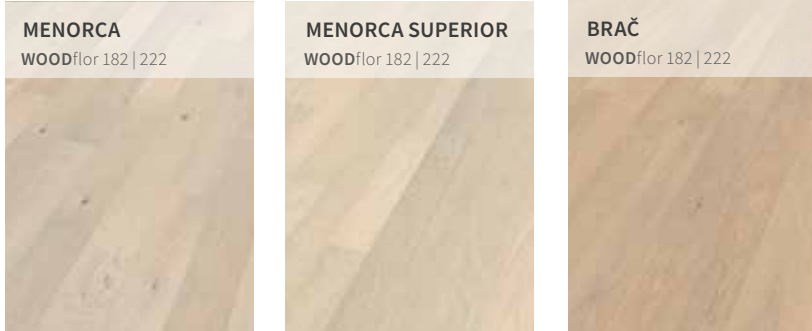
FORMENTERA

KRK

FIJI

KUBA

LIVING LIKE ON
YOUR MOST
BEAUTIFUL
VACATION.



MY HOME. MY ISLAND ELEVATION

At home, we also want to enjoy a truly special way of living – a retreat that leaves behind the stress of everyday life and calms the senses.

With the Elevation trend collection, everyday life becomes secondary: The scent of natural materials, the unique textures, the play of harmonious color nuances on the surface of the wood – all of this conveys a feeling of freedom and relaxation that we usually only experience on vacation. Every room becomes an oasis that fills not only the external but also the inner space.

With the Elevation parquet collection, every step in your home becomes a journey – a journey into the freedom of nature, into the feeling of vacation and serenity.

The respective products are as diverse and distinctive in their structure and color spectrum as the islands they are named after – each board tells the story of time and nature.

The entire range of Elevation can be viewed in our Elevation catalog. Let your gaze set course for your „dream island“ and perhaps find a new „home harbor“!



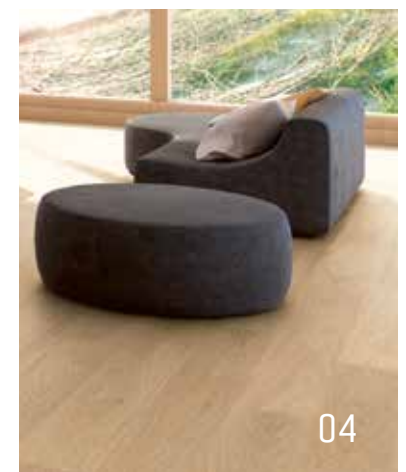
Full catalogue

For more to explore, visit www.scheucherparkett.at and, of course, your Scheucher partner.

SUPERIOR

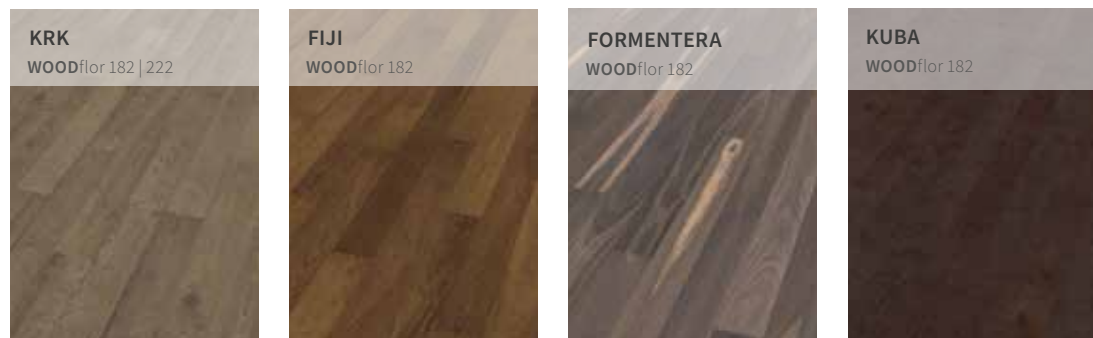
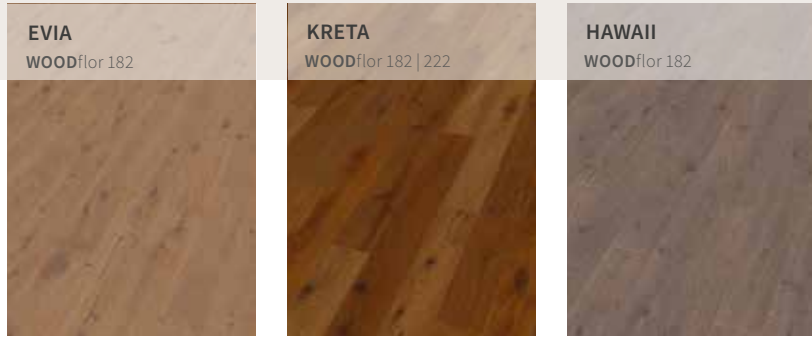
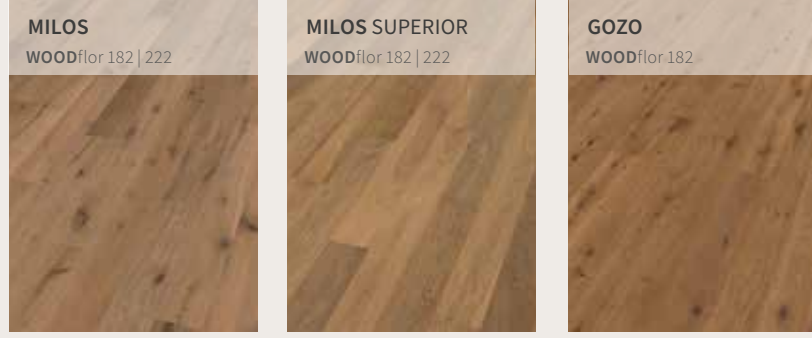
In order to adapt the unique Elevation range precisely to your living requirements, Scheucher will be offering the particularly elegant and calm SUPERIOR grading for selected products from 2025. Superior creates an atmosphere of natural calmness and serenity - a feeling we know from our best vacations.

- 01 **WOOD**for NOVOLOC® 5G 222
ELEVATION Oak MENORCA SUPERIOR
- 02 **WOOD**for NOVOLOC® 5G 182
ELEVATION Oak EVIA
- 03 **WOOD**for NOVOLOC® 5G 182
ELEVATION Black Walnut KUBA
- 04 **WOOD**for NOVOLOC® 5G 222
ELEVATION Oak SYLT SUPERIOR
- 05 **WOOD**for NOVOLOC® 5G 182
ELEVATION Oak KRK



20 HIGH-QUALITY, PARTIALLY HAND-FINISHED PARQUET CREATIONS, INSPIRED BY UNIQUE ISLANDS, CREATE AN ATMOSPHERE OF NATURAL PEACE AND SERENITY.

A FEELING WE KNOW FROM OUR BEST VACATIONS.





PROJECT

OAK MILOS GOES TEXAS

WOODflor NOVOLOC® 5G 182
ELEVATION Oak MILOS

This parquet story takes us on a special, yet somewhat longer journey: to Austin, Texas, where our uniquely refined longstrip oak Milos, from our range Elevation was installed across 345 m².

See how the noble parquet floor blends seamlessly with the high-quality furnishings, creating that incomparable atmosphere:



STAIR BOX.

The professional system for a greater added value. Measure stairs simply digitally. Without stencils. Simple data transfer from job site directly to Scheucher.

STAIRbox is a system, that simply enables the digital measurement of stairs and staircases as well as – in addition – the direct purchase of parquet elements ready for assembly from Scheucher.

STAIR-TREADS

STAIRbox makes it possible to create all types of stair treads quickly and easily – irrespective of the basic form or configuration – with the same appearance as the parquet.

ALL WOOD TYPES

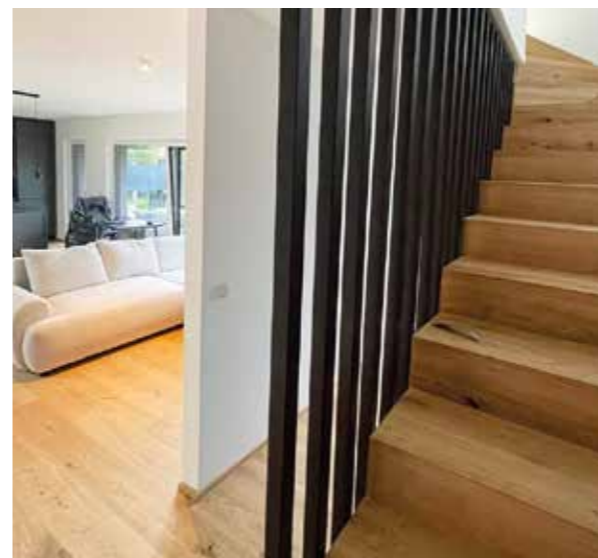
FASCIA BOARDS

What is more, fascia boards that are identical to the installed parquet and blend harmoniously into the overall view are no longer a problem, thanks to **STAIR**box.

ALL WOOD TYPES
WHITE FINISHING COAT
WHITE-PAINTED MDF

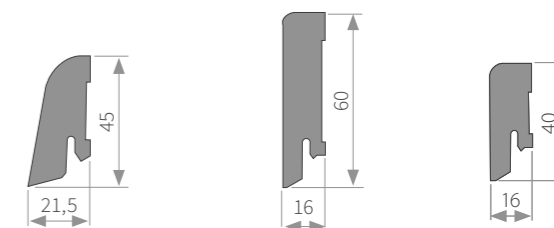


DOWNLOAD
 STAIRBOX
 KATALOG



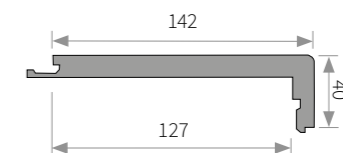
SKIRTINGS

To be shown off to its full advantage, every parquet floor needs a clean finish to walls and the like. For this purpose, Scheucher has a wide, precisely matching range of skirtings that can be harmoniously matched to the installed parquet.

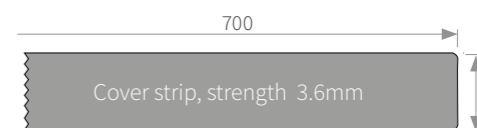
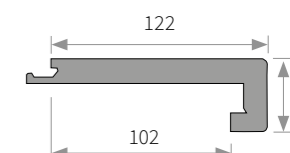


STAIR NOSINGS

L-FORM NOVOLOC®



U-FORM NOVOLOC®



Stair nosings are available for all current products in L-form and U-form.



CARE AND MAINTENANCE.

THE GOLD OF THE FOREST

Our hearts beat for parquet - „the gold of the forest“ - as we like to call it. This is why we constantly endeavor to create innovative products with the greatest care in order to be able to offer you fist-class quality products that will give you pleasure over many decades.

To us at least of equal importance is, what's happening with our „gold“ once it left our factory and is finally brought to your homes.

For that reason we were also intensively engaged in developing the perfect care and maintenance for your parquet floor once it requires an extra portion of care.



It is usually sufficient to celan your floor using a vacuum cleaner or a soft broom.

TENSEO



BONA SPRAY MOP

The Bona Spray Mop enables you to clean and maintain your wooden floor in a sweep. Ergonomic and simple to use, the Spray Mop is quick to assemble and refill with the specially developed Bona floor cleaner cartridge.

Forget filling up a bucket and adding concentrate - just spray and clean! No polishing required.



SEDA



CARE BOY

With the Careboy from Scheucher you will experience a new and comfortable way of efficient and innovative cleaning and care of your oiled / waxed parquet floors. It is a multifunctional, cordless waxer and cleaner for the routine use together with our compatible products Parquet Care and Parquet Cleaner.



- + Easy and innovative cleaning & care
- + Cordless battery mode
- + Dual drive
- + Specially designed nozzle, spraying at the touch of a button
- + Controlled spraying quantity
- + Protects your floor from over-wet
- + Minimum water consumption
- + Pivoting joint up to 360°
- + Built-in LED lighting for dark areas
- + Low-noise



DURABLE FLO_R.

To preserve the beautiful look of your parquet floor and protect it's surface please avoid mechanical damages wherever possible. To avoid scratches and serious damages it is recommended to place mats in the entrance area and remove sand and grit with a broom immediately. Equip your movable furniture with felt gliders and use special rolls for wooden floors on office chairs.

Do not leave any wet items on your parquet floor. To assess results properly, try out care and/or cleaning procedures in an inconspicuous place before applying the product.



SPACE FOR YOUR STYLE.

Get an overall impression and bring your rooms to life by using our Parquet Finder. Experience how your home can significantly transform by choosing the perfect floor.



PARQUET
FINDER

STYLE FOR YOUR SPACE.

To find out which parquet fits best, the parquet finder offers an overview of almost all product options in our diverse range of wood types, colors, surfaces and dimensions.

At the same time, you can see your favorite parquet right in your own home with our interactive floor visualization tool.

Simply upload your own room photo!

Complete your online experience with a free sample order!

scheucherparkett.at/en/parquet-finder

ROOM CLIMATE

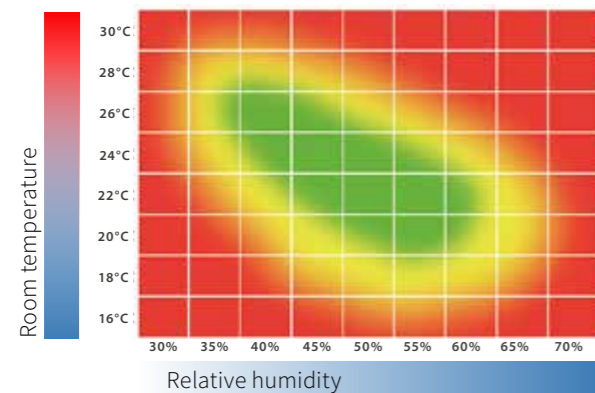
EN 15251:2012 „Input parameters for indoor climate“ recommends a seasonally caused relative humidity of approx. 30 % to 65 % for a healthy room climate. In this range, natural characteristics of wood like gaps, minor cracks or warpage of your parquet floor may occur in a moderate degree. In case of long-term deviations, health impairments or excessive changes in the appearance of your hardwood floor, like big deformations, big gaps and cracks may occur. Wood as a natural material reacts more sensitively to changes of the relative humidity than to changes of temperature.

Therefore the key to success lies in the observance of an optimum relative humidity of your indoor air!

This generally requires periodic cleaning and maintenance of your parquet floor as well as an appropriate air humidification in the heating season. We therefor recommend cold humidifiers with an integrated sterilization system. The installation of Fidbox records your climate above and under your parquet floor over many years and can be conveniently monitored by mobile app. Paying attention to these important factors will guarantee pleasure over decades with your high-quality parquet floor from Scheucher.

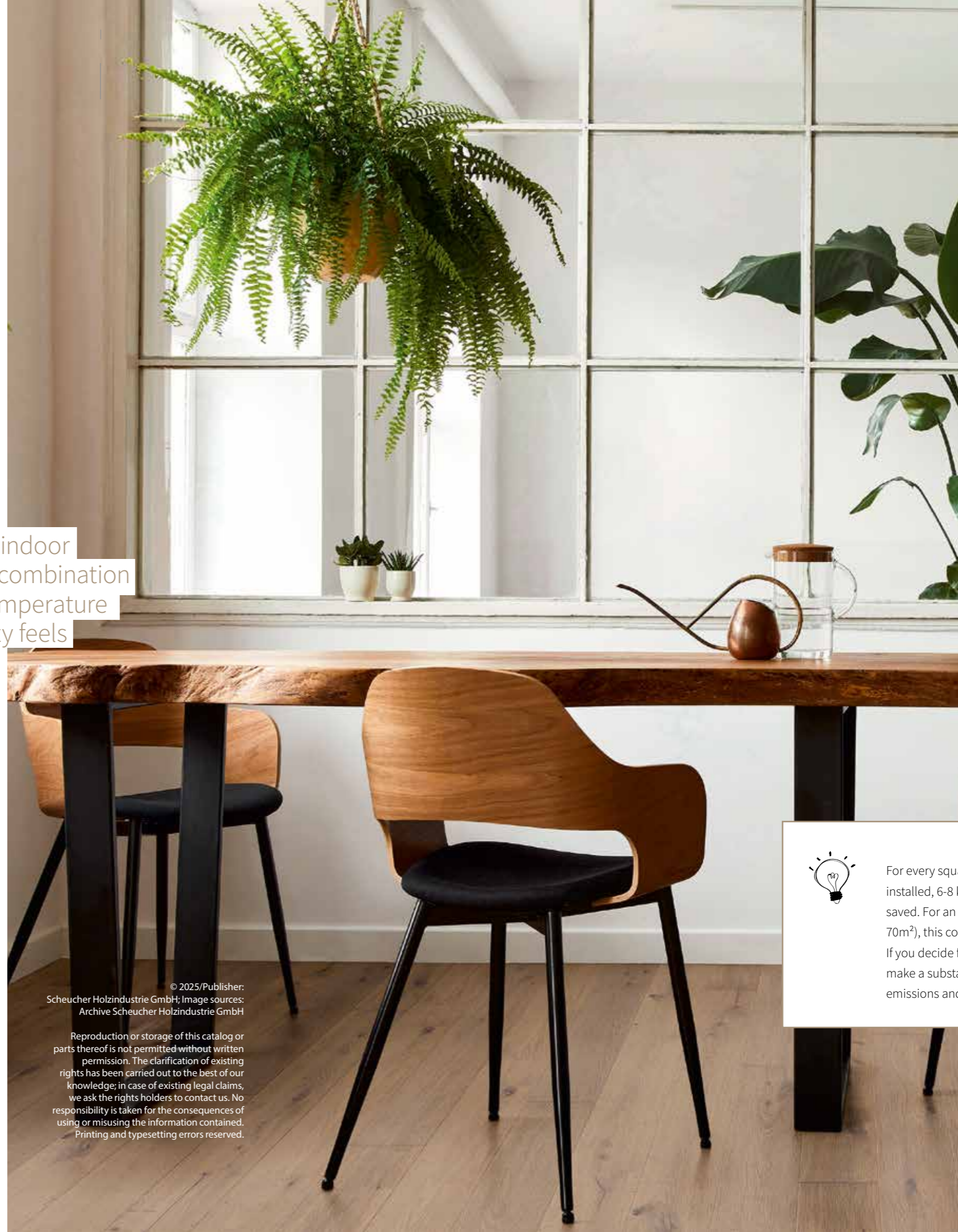
This „feel comfortable“ chart for indoor room climate demonstrates the combination of relative humidity and room temperature where the overwhelming majority feels comfortable in indoor rooms.

- Optimum range
- Temporarily acceptable range
- Inappropriate indoor climate for humans and wood



© 2025/Publisher: Scheucher Holzindustrie GmbH; Image sources: Archive Scheucher Holzindustrie GmbH

Reproduction or storage of this catalog or parts thereof is not permitted without written permission. The clarification of existing rights has been carried out to the best of our knowledge; in case of existing legal claims, we ask the rights holders to contact us. No responsibility is taken for the consequences of using or misusing the information contained. Printing and typesetting errors reserved.



FREE SAMPLES

We've put down roots in more than 30 countries and supply the parquet flooring of your dreams in almost all parts of the world.



FIND A SHOWROOM

TIP



For every square meter of parquet installed, 6-8 kg of CO2 emissions can be saved. For an average household (approx. 70m²), this corresponds to about 500 kg. If you decide for a parquet floor, you'll make a substantial contribution to CO2-emissions and save our climate.



SCHEUCHER®

Scheucher Holzindustrie GmbH
Zehensdorf 100 | 8092 Mettersdorf

Branch Vienna
Zetschegasse 9 | 1230 Vienna

info@scheucherparkett.at
www.scheucherparkett.at

#scheucherparkett @scheucherparkett

